

# HEARTLAND

*America's Best Tan™*

4251 N.E. Port Drive • Lee's Summit, MO 64064 • 800-554-8268



## Owner & Assembly Manual

Les Spécifications Françaises Enclos



**124 and 124/1  
Specifications  
Exposure Schedule  
Bed Assembly  
and Wiring Diagrams**

Les Spécifications Françaises Enclos

# SPECIFICATIONS

## 124

LENGTH: 85.5L" X 36"W  
WEIGHT: 585LBS  
NUMBER OF LAMPS: 24  
ELECTRICAL DRAW: 13AMPS @ 220VOLTS  
CIRCUIT REQUIRED: 220VOLTS, with ground, 20AMP Load  
RECOMMENDED VOLTAGE: 230 - 240 optimum voltage running  
ROOM HVAC REQUIRED: 1/2 Ton (6,000btu)

## 124/1

LENGTH: 85.5L" X 36"W  
WEIGHT: 600LBS  
NUMBER OF LAMPS: 24, 1 facial lamp  
ELECTRICAL DRAW: 14AMPS @ 220VOLTS  
CIRCUIT REQUIRED: 220VOLTS, with ground, 30AMP Load  
RECOMMENDED VOLTAGE: 230 - 240 optimum voltage running  
ROOM HVAC REQUIRED: 1/2 Ton (6,000btu)

**MELANIN** - The brownish pigment produced by special cells in the base layer of the skin determines the individual's tan. As the skin is exposed to the ultraviolet light, the melanin is activated and combines with protein cells that rise to the skin's surface, thus producing a tan. The amount of melanin in your body determines how quickly and dark you tan. The more melanin produced and exposure time an individual has, the faster and deeper the individual will tan.

**NOTE:** The tan produced by the 124 is a deep, rich "COSMETIC" tan. However, regardless of how dark an individual may tan on this system, it will not provide adequate protections against overexposure to natural sunlight or UVB tanning systems.

SKIN TYPE II - This is the individual that usually burns easily and severely, tans minimally or lightly and peels  
SKIN TYPE III - Often referred to as "AVERAGE" complexion. burns moderately and tans about average  
SKIN TYPE IV - This individual burns minimally, tans easily and above average with each exposure  
SKIN TYPE V - This individual rarely burns, tans easily and substantially

### IMPORTANT NOTE:

Customers that wear contact lenses, should be made aware that the heat and ventilation wind may dry out their contacts and should be removed prior to the session.

Use only creams, oils or lotions (particularly suntan lotions) that are recommended by Heartland Tanning, Inc. Equally important - many facial makeups have oil bases and sun block should be removed prior to a session.

It is recommended that following a tanning session, a skin moisturizer be applied. This promotes a smoother, more even looking tan.

# EXPOSURE SCHEDULE 124 and 124/1

**DANGER - ULTRAVIOLET RADIATION.** Follow instructions. Avoid overexposure. As with natural sunlight, overexposure can cause eye and skin injury and allergic reactions. Repeated exposure may cause premature aging of the skin and skin cancer. **Wear protective eyewear: failure to may result in severe burns or long-term injury to eyes.**

Medications or cosmetics may increase your sensitivity to the ultraviolet radiation. Consult physician before using sunlamp if you are using medications or have a history of skin problems or believe yourself especially sensitive to sunlight. If you do not tan in the sun, you are unlikely to tan from the use of this product.

This system is intended to be used only with Everglo 71/100W lamps, Durasun F71BP 100W, Bellarium S SA1 71/100W and [Everglo 59/100W lamps and Philips HPA 400/30 S lamps (facial unit, where applicable)].

## Questions on Sales or Service

Follow recommended exposure schedule for the skin type.

**Heartland Tanning, Inc. • Lee's Summit, MO • 1-800-554-8268**

<b>RECOMMENDED EXPOSURE SCHEDULE</b>					
<b>Skin Type</b>	<b>Week 1 1st - 3rd Treatments</b>	<b>Week 2 4th - 6th Treatments</b>	<b>Week 3 7th - 10th Treatments</b>	<b>Week 4 11th - 15th Treatments</b>	<b>Weekly Subsequent Treatments</b>
II - Fair	4MINUTES	8MINUTES	12MINUTES	16MINUTES	20MINUTES
III - Average	4MINUTES	8MINUTES	12MINUTES	16MINUTES	20MINUTES
IV - Brown	4MINUTES	12MINUTES	16MINUTES	20MINUTES	20MINUTES
V - Dark Brown	4MINUTES	12MINUTES	16MINUTES	20MINUTES	20MINUTES
<b>MAXIMUM EXPOSURE TIME IS 20 MINUTES</b>					
This product is in conformity with performance standards for sunlamp products under CFR 21 Part 1040					

This unit utilized UVA lamps. **Replace only with Everglo 71/100W lamps, Durasun F71BP 100W, Bellarium S SA1 71/100W, Velocity 71"/100W and [Everglo 59/100W lamps and Philips HPA 400/30 S lamps (Facial unit, where applicable)].** The minimum exposure position is .5 inches (1.27 cm) from the lamps surface (preset by the mfg.). Read the instruction booklet before using this device. To use, lie down under canopy and pull down as far as adjustment will allow. **CAUTION: THE USE OF ANY OTHER POSITION MAY RESULT IN OVEREXPOSURE.**

Tanning can begin on a regular basis. An appearance of tanning normally appears after a few exposures and maximizes after four (4) weeks of exposure. **Use protective eyewear** whenever equipment is energized.

Read the instruction booklet before using.

# Caractéristiques

## 124

longueur :	85,5 pouces par 36 pouces
hauteur :	34 pouces (avec le couvercle fermé)
poids d'expédition :	585 livres
nombre de lampes :	24
aspiration électrique :	13 ampères à 220 volts
circuit requis :	220 volts, avec un disjoncteur différentiel, briseur de 30 ampères

## 124/1

longueur :	85,5 pouces par 36 pouces
hauteur :	34 pouces (avec le couvercle fermé)
poids d'expédition :	600 livres
nombre de lampes :	25
aspiration électrique :	14 ampères à 220 volts
circuit requis :	220 volts, avec un disjoncteur différentiel, briseur de 30 ampères

**DANGER – RAYONNEMENT ULTRAVIOLET.** Suivez les instructions. Évitez la surexposition. Comme avec les rayons naturels du soleil, la surexposition peut causer dommage aux yeux et à la peau et des réactions allergiques. L'exposition répétée peut causer le vieillissement prématuré de la peau et du cancer de la peau. **Portez des lunettes protectrices; le non-respect de cette consigne peut entraîner de graves brûlures ou des lésions oculaires à long terme.**

Les médicaments ou les produits de beauté peuvent augmenter votre sensibilité au rayonnement ultraviolet. Consultez un médecin avant d'utiliser la lampe solaire si vous utilisez des médicaments ou avez une histoire des problèmes de peau ou croyez-vous particulièrement sensibles aux rayons du soleil. Si vous ne bronzez pas au soleil, il est peu probable que vous bronzez avec l'utilisation de ce produit.

Questions au sujet des ventes ou de service : Heartland Tanning, Inc. • Lee's Summit, MO – 1-800-554-8268

Suivez le programme recommandé d'exposition pour le type de peau.

Cette appareil utilise des lampes de l'ultra-violet A. Remplacez seulement avec les lampes de marque **Everglo 71/100W, Durasun F71BP 100W, Bellarium S SA1 71/100W et [Everglo 59/100W et Philips HPA 400/30 S (ampoule faciale de bronzage, là où applicable)]**. La position minimum d'exposition est à 0,5 pouces (1,27 cm) de la surface de la lampe (instituez par le manufacturier). Lisez le livret d'instruction avant d'utiliser ce dispositif. Pour utiliser, couchez-vous sous l'écran et abaissez dans la mesure où le réglage laissera. **ATTENTION : L'UTILISATION DE N'IMPORTE QUELLE AUTRE POSITION PEUT AVOIR COMME CONSÉQUENCE LA SUREXPOSITION.**

Le bronzage peut commencer de façon régulière. Un aspect de bronzage normalement apparaît après quelques expositions et atteint son niveau maximal après quatre (4) semaines d'exposition. **Utilisez des lunettes protectrice à chaque fois que l'appareil est active.** Lisez le livret d'instructions avant l'utilisation.

Horaire d'exposition recommandé					
Type de peau	Semaine 1 1er – 3e Traitements	Semaine 2 4e – 6e Traitements	Semaine 3 7e – 10e Traitements	Semaine 4 11e – 15e Traitements	Bihebdomadaire Traitements subséquents
II – Claire	4 MINUTES	8 MINUTES	12 MINUTES	16 MINUTES	20 MINUTES
III – Moyen	4 MINUTES	8 MINUTES	12 MINUTES	16 MINUTES	20 MINUTES
IV – Foncé	4 MINUTES	12 MINUTES	16 MINUTES	20 MINUTES	20 MINUTES
V – Très foncé	4 MINUTES	12 MINUTES	16 MINUTES	20 MINUTES	20 MINUTES

**LE TEMPS MAXIMUM D'EXPOSITION EST DE 20 MINUTES**

Ce produit est conforme aux normes de rendement pour des produits de lampe de soleil tel que stipule la partie 1040 du document CFR 21.



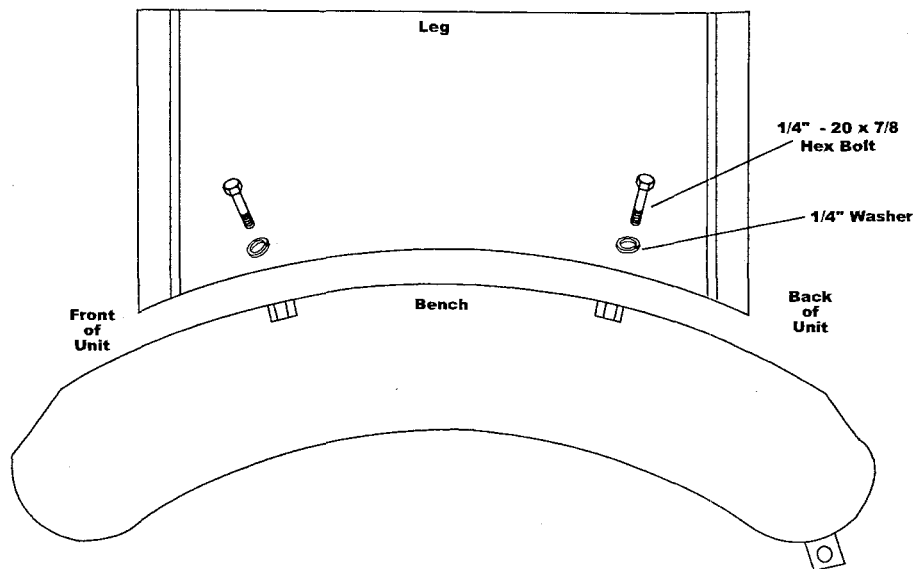
# 124 and 124/1

## ASSEMBLY INSTRUCTIONS

### TOOLS YOU WILL NEED:

- A. 9/16" SOCKET
- B. 7/16" SOCKET
- C. 1/4" ALLEN WRENCH (PROVIDED)
- D. 5/32" ALLEN WRENCH (PROVIDED)
- E. 13mm SOCKET OR ADJUSTABLE CRESCENT WRENCH
- F. TWO (2) OR MORE PEOPLE

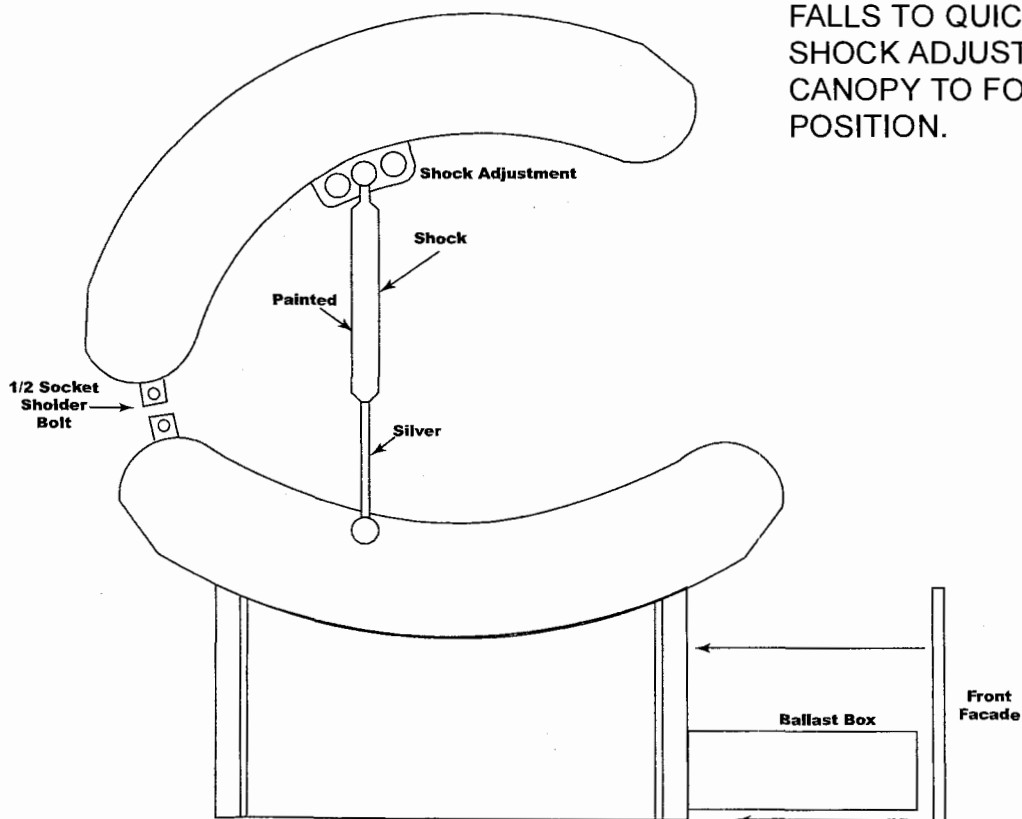
STEP 1: POSITION THE BENCH UPSIDE DOWN. DETERMINE LEFT AND RIGHT LEGS BY POSITIONING THE SHOULDER BOLTS ON THE LEGS TO THE INSIDE AND FRONT OF THE UNIT. USING THE 1/4" - 20X 7/8 BOLTS AND 1/4" WASHERS PROVIDED AND BOLT THE LEGS TO THE BENCH. (USING THE 7/16 SOCKET WRENCH).



STEP 2: TURN THE UNIT RIGHT SIDE UP, PLACE THE CANOPY ON THE TOP OF THE BENCH ALIGNING THE HINGE PLATES, BOLT THE HINGE PLATES TOGETHER USING THE 1/2" X 1/2" SHOULDER BOLT AND 3/8" NUT.

STEP 3: SNAP THE LARGE END OF THE SHOCK ONTO THE CANOPY LIFT THE CANOPY AND SNAP THE SMALL END ONTO THE BENCH.

**NOTE: PROPER CANOPY ADJUSTMENT** - IF CANOPY RAISES ON IT'S OWN, MOVE SHOCK ADJUSTMENT ON CANOPY TO REAR POSITION. IF CANOPY FALLS TO QUICKLY, MOVE SHOCK ADJUSTMENT ON CANOPY TO FORWARD POSITION.



STEP 4: PLACE THE BALLAST BOX BETWEEN THE LEGS OF THE UNIT. RUN CORD 1 FROM THE BENCH TO THE BALLAST BOX. RUN CORD 2 FROM THE CANOPY TO THE BALLAST BOX. PLACE THE FRONT FACADE ONTO THE FRONT OF THE UNIT.

**WARNING: TO INSURE PROPER INSTALLATION OF CORDS, TIGHTEN CORDS UNTIL THEY LOCK.**

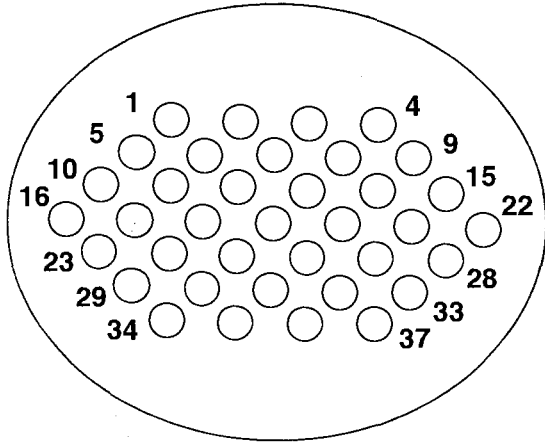
NOTE: WEAR PROTECTIVE EYEWEAR: FAILURE TO DO SO MAY RESULT IN SEVERE BURNS OR LONG-TERM INJURY TO EYES.

NOTE: ELECTRICAL CONNECTION TO POWER SUPPLY MUST BE IN COMPLIANCE WITH NECA REGULATIONS AND PERFORMED BY A QUALIFIED ELECTRICIAN.

**IF YOU HAVE ANY QUESTIONS, PLEASE CALL: 1-800-554-8268**

# 124 SERIES

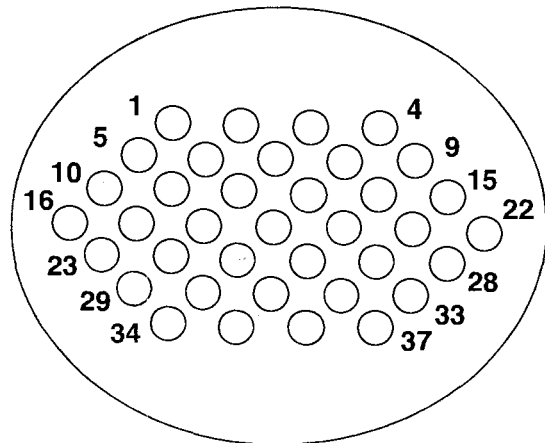
## HARNES CORD #1 / RECEPTACLE #1



PIN#	COLOR	RECEPTACLE LOCATION	PLUG LOCATION
1	Blue	Lamp 1 head end	Ballast 1-1
2	Yellow	Lamp 2 head end	Ballast 1-2
3	Orange	Lamp 3 head end	Ballast 1-3
4	Purple	Lamp 4 head end	Ballast 1-4
5	Grey	Lamp 5 head end	Ballast 1-5
6	Pink	Lamp 6 head end	Ballast 1-6
7	Tan	Lamp 7 head end	Ballast 1-7
8	Light Blue	Lamp 8 head end	Ballast 1-8
9	White/Orange	Lamp 9 head end	Ballast 1-9
10	White/Blue	Lamp 10 head end	Ballast 1-10
11	White/Green	Lamp 11 head end	Ballast 1-11
12	Black/Red	Lamp 12 head end	Ballast 1-12
13	Empty		
14	Red	Fan Circuit	Contactor-Fan
15	Empty		
16	White/Red	Fan Circuit	Contactor-Fan
17	Empty		
18	Empty		
19	Green	Ground	Ground
20	Empty		
21	Empty		
22	Black	Fan Circuit	Contactor-Fan
23	Empty		
24	White/Black	Fan Circuit	Contactor-Fan
25	Empty		
26	Blue	Lamp 1 foot end	Capacitor 1-1
27	Yellow	Lamp 2 foot end	Capacitor 1-2
28	Orange	Lamp 3 foot end	Capacitor 1-3
29	Purple	Lamp 4 foot end	Capacitor 1-4
30	Grey	Lamp 5 foot end	Capacitor 1-5
31	Pink	Lamp 6 foot end	Capacitor 1-6
32	Tan	Lamp 7 foot end	Capacitor 1-7
33	Light Blue	Lamp 8 foot end	Capacitor 1-8
34	White/Orange	Lamp 9 foot end	Capacitor 1-9
35	White/Blue	Lamp 10 foot end	Capacitor 1-10
36	White/Green	Lamp 11 foot end	Capacitor 1-11
37	Black/Red	Lamp 12 foot end	Capacitor 1-12

\*If unit is equipped with Facial Cassettes  
Lamp orientation is from FRONT of unit to BACK of unit (#1 through #20)

## HARNES CORD #2 / RECEPTACLE #2

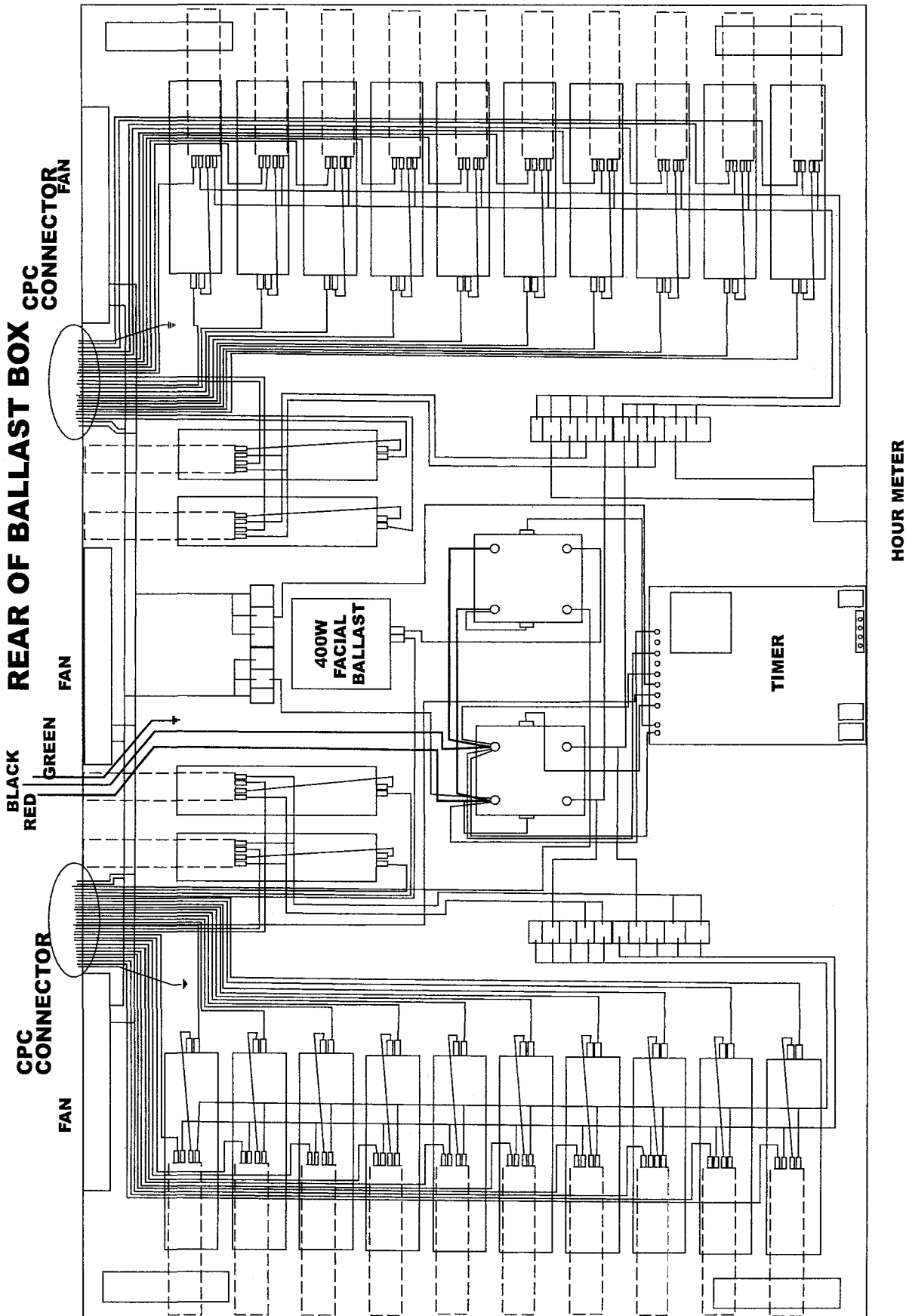


PIN#	COLOR	RECEPTACLE LOCATION	PLUG LOCATION
1	Blue	Lamp 1 head end	Ballast 2-1
2	Yellow	Lamp 2 head end	Ballast 2-2
3	Orange	Lamp 3 head end	Ballast 2-3
4	Purple	Lamp 4 head end	Ballast 2-4
5	Grey	Lamp 5 head end	Ballast 2-5
6	Pink	Lamp 6 head end	Ballast 2-6
7	Tan	Lamp 7 head end	Ballast 2-7
8	Light Blue	Lamp 8 head end	Ballast 2-8
9	White/Orange	Lamp 9 head end	Ballast 2-9
10	White/Blue	Lamp 10 head end	Ballast 2-10
11	White/Green	Lamp 11 head end	Ballast 2-11
12	Black/Red	Lamp 12 head end	Ballast 2-12
13	Empty		
14	Red*	Fan Term Strip	Facial Fan
15	Empty		
16	White/Red	Fan Circuit	Contactor-Fan
17	Red/Black*	Facial Ballast #1	Facial Ignitor
18	Red/White*	Facial Contactor Control	Facial Flag Switch
19	Green	Ground	Ground
20	Black/White*	Timer Board	Facial Flag
Switch			
21	Empty		
22	Black	Fan Circuit	Contactor-Fan
23	Empty		
24	White/Black*	Fan Term Strip	Facial Fan
25	Black/Red*	Facial Contactor	Facial Ignitor
26	Blue	Lamp 1 foot end	Capacitor 2-1
27	Yellow	Lamp 2 foot end	Capacitor 2-2
28	Orange	Lamp 3 foot end	Capacitor 2-3
29	Purple	Lamp 4 foot end	Capacitor 2-4
30	Grey	Lamp 5 foot end	Capacitor 2-5
31	Pink	Lamp 6 foot end	Capacitor 2-6
32	Tan	Lamp 7 foot end	Capacitor 2-7
33	Light Blue	Lamp 8 foot end	Capacitor 2-8
34	White/Orange	Lamp 9 foot end	Capacitor 2-9
35	White/Blue	Lamp 10 foot end	Capacitor 2-10
36	White/Green	Lamp 11 foot end	Capacitor 2-11
37	Black/Red	Lamp 12 foot end	Capacitor 2-12

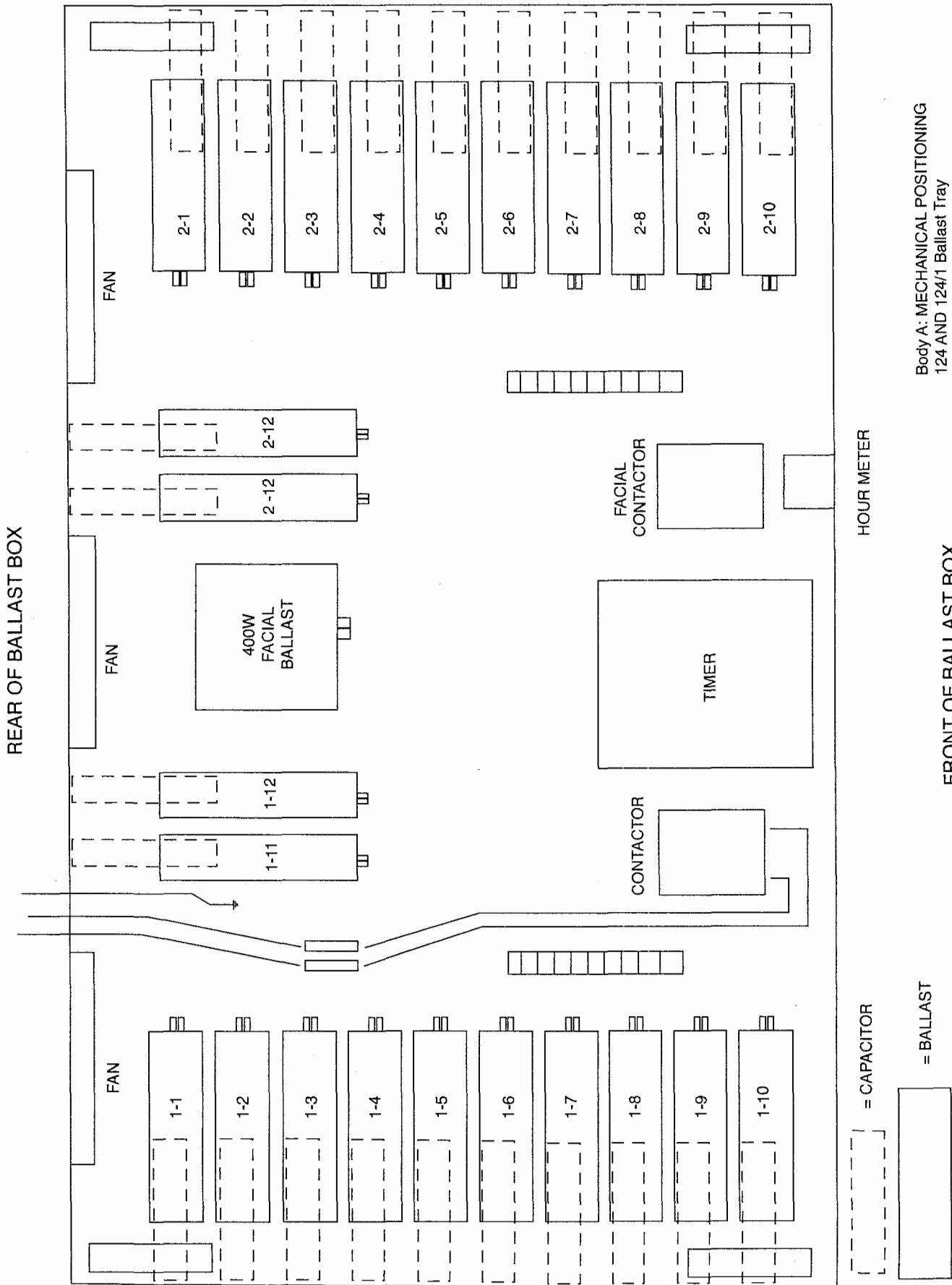
\*If unit is equipped with 1 Facial Cassettes  
Lamp orientation is from FRONT of unit to BACK of unit (#1 through #20)



# 124 SERIES WIRING DIAGRAM BALLAST BOX



# 124 SERIES WIRING DIAGRAM BALLAST BOX



Body A: MECHANICAL POSITIONING  
124 AND 124/1 Ballast Tray

FRONT OF BALLAST BOX

# 124 SERIES BALLAST BOX

